

Quarterly Disclosure Statement for 01/07/13 to 30/06/14



Forsyth Barr KiwiSaver Scheme Personal Choice - Global Equities Fund



What is the purpose of this statement?

This statement provides key information about the Forsyth Barr KiwiSaver Scheme Personal Choice - Global Equities Fund. It tells you how the fund has performed and what fees it charged, and will help you to compare it with other funds. We prepared this statement in accordance with the KiwiSaver (Periodic Disclosure) Regulations 2013. This information is not audited and may be updated.

Description of the fund

The fund aims to maximise the capital returns available from investing in international equities. The fund provides investors with access to a multi-manager approach to investing in shares listed on recognised international stock exchanges.

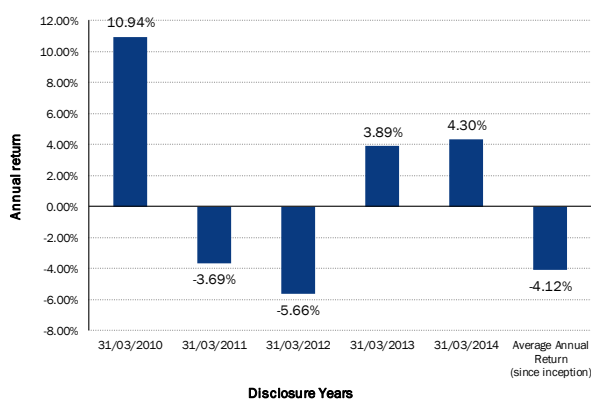
Total value of the fund	\$1,966,905.60
Number of members in the fund	324
Date the fund started	26 June 2008

How has the fund performed?

	Past year
Annual return (after deductions for fund fees and tax ¹)	4.02%

How has the fund performed in the past?

This shows the return after fund fees and tax for each tax year since the fund started and the average annual return since the fund started. It's important to note that this doesn't tell you how the fund will perform in the future.



What fees were members charged?

The returns above are after deductions for fund fees². These fees were last totalled up for the year to 31/03/14 and were:

Total fund fees	1.95% of members' investments
<i>Which are made up of:</i>	
Annual management fee	0.98%
Performance-based fees	0.00%
Other fees and costs	0.97% ³

Members were also charged membership fees⁴ of \$36 over the year to 31/03/14.

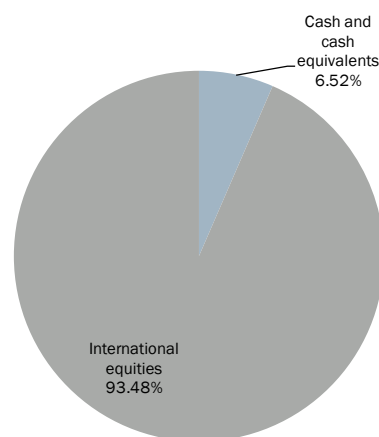
Members may also be charged fees for specific actions or decisions (e.g. members may make switches twice a year at no cost. Any subsequent switches will incur a \$25 fee). See page 16 of the current [Investment Statement](#) for more information about these fees.

Example of how this applies to a member

Jane had \$10,000 in the fund at the start of the year and didn't make any further contributions. At the end of the year, Jane received a return after fund fees and tax were deducted of \$402 (that's 4.02% of her initial \$10,000). Jane also paid \$36 in membership fees. This gives Jane a total return of \$366 for the year.

What does the fund invest in?

This shows the types of assets that the fund invests in.



Target investment mix

This shows the mix of assets that the fund generally intends to invest in.

Cash and cash equivalents	0%
New Zealand fixed interest	0%
International fixed interest	0%
Australasian equities	0%
International equities	100%
Listed property	0%
Unlisted property	0%
Other	0%

Top 10 investments

	Name	Percentage of fund net assets	Type	Country	Credit rating (if applicable)
1	Magellan Global Fund	25.30%	Fund	Australia	n/a
2	Ironbark GTP Global Equity Thematic Fund	24.21%	Fund	Australia	n/a
3	Westpac At-Call Deposit	6.52%	Cash and cash equivalents	NZ	AA-
4	Google	2.97%	International equities	USA	n/a
5	Novartis	2.60%	International equities	Switzerland	n/a
6	Holcim	2.54%	International equities	Switzerland	n/a
7	Apple	2.47%	International equities	USA	n/a
8	Standard Chartered	2.37%	International equities	UK	n/a
9	Schlumberger	2.26%	International equities	USA	n/a
10	McDonald's	2.10%	International equities	USA	n/a

The top 10 investments make up 73.34% of the fund⁵.

Key personnel

This shows the directors and employees who have the most influence on the investment decisions of the fund.

Name	Current position	Time in current position	Previous or other position	Time in previous or other position
Kevin Stirrat	Head of Investment Strategy Forsyth Barr Limited	8 years and 9 months ⁶	Director, Deutsche Bank	11 years
Craig Alexander	Investment Manager Forsyth Barr Limited	1 year ⁶	Head of Fixed Interest, Tower Investments	5 years
Rob Mercer	Head of Private Wealth Research Forsyth Barr Limited	2 years and 1 month ⁶	Head of Research, Forsyth Barr Limited	11 years
Neil Paviour-Smith	Director	6 years and 4 months	Managing Director, Forsyth Barr Limited (current)	12 years
Paul van Koningsveld	Director	6 years and 4 months	Chief Operating Officer, Forsyth Barr Limited (current)	13 years

Further information

Information about conflicts of interest

There have not been changes to the nature, or increases in the scale of, the fund's related-party transactions compared with the last quarter. See the Forsyth Barr KiwiSaver Scheme annual financial statements for more information about the scheme's related-party transactions.

Change to trade allocation, execution and proxy voting policies

There have not been changes to the fund's trade allocation, execution and proxy voting policies in the past three months. See www.forsythbarr.co.nz/tradeandvotingpolicy for more information about these policies.

Changes to valuation methods

There have not been changes to the fund's valuation methods in the past three months.

Electronic disclosure of this information

Most of the information contained in this statement, including some additional information, is available in a spreadsheet at <http://www.forsythbarr.co.nz/file-library/doc-ks-qds-csv-global-equities-jun14/>

Notes

- Returns in this statement are after tax at the highest prescribed investor rate (PIR) of tax for an individual New Zealand resident. Your tax rate may be lower.
- Fund fees are fees charged as a percentage of a member's interest in the fund (i.e. as a percentage of their KiwiSaver account balance).
- Fees arising from investments in funds managed by managers other than associated entities of Forsyth Barr KiwiSaver Limited are not readily available given that publicly available unit prices are already net of fees. These fees have therefore been estimated by applying the fee percentage charged by the third-party manager at each month-end against the fund's exposure to the relevant fund. In addition, the third-party manager of the Magellan Global Fund is entitled to charge a performance fee. As the annual performance fee charged is only identifiable at December, the performance fee for the March 2014 year has been estimated at each month-end over the 12 month period by applying the performance fee methodology, as described by the third-party manager.
- Membership fees are the fixed dollar charges for membership in the KiwiSaver scheme.
- The investment in funds was made under the target investment to international equities.
- Kevin Stirrat, Craig Alexander and Rob Mercer are employees of Forsyth Barr Limited (and not the manager). The manager has delegated part of the day to day management of the scheme to Forsyth Barr Limited.

Manager's Certificate Forsyth Barr KiwiSaver Scheme

21 July 2014

The disclosure statement has been prepared for the purposes of the KiwiSaver (Periodic Disclosure) Regulations 2013.

To the best of the manager's, Forsyth Barr KiwiSaver Limited, knowledge after making reasonable inquiry, all information required by the regulations has been disclosed in accordance with these regulations and the information presented is accurate.

The disclosure statement does not contain any matter that is likely to deceive or mislead with regard to any particular that would be material to an offer of an interest in the Forsyth Barr KiwiSaver scheme.



Neil Paviour-Smith
Director
Forsyth Barr KiwiSaver Limited