

# Quarterly Disclosure Statement for 01/01/13 to 31/12/13



## Forsyth Barr KiwiSaver Scheme Personal Choice - Local Authority Fund



### What is the purpose of this statement?

This statement provides key information about the Forsyth Barr KiwiSaver Scheme Personal Choice - Local Authority Fund. It tells you how the fund has performed and what fees it charged, and will help you to compare it with other funds. We prepared this statement in accordance with the KiwiSaver (Periodic Disclosure) Regulations 2013. This information is not audited and may be updated.

### Description of the fund

The fund aims to provide a gross return above the ANZ Local Authority Bond index return, on a rolling 12 month basis. The fund invests in a portfolio of New Zealand Government Stock, Local Authority securities and securities issued by the New Zealand Local Government Funding Agency.

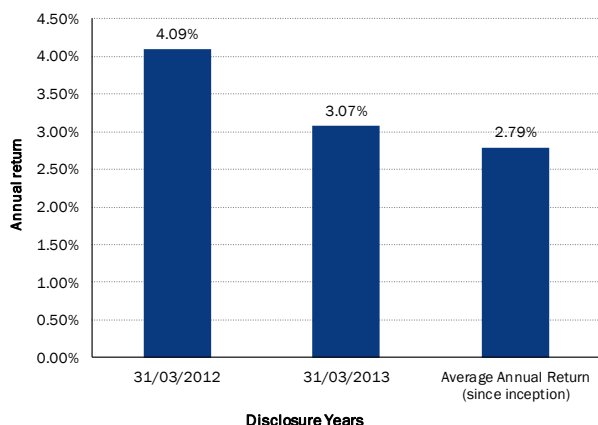
<b>Total value of the fund</b>	\$149,472.35
<b>Number of members in the fund</b>	57
<b>Date the fund started</b>	18 October 2010

### How has the fund performed?

	Past year
<b>Annual return</b> (after deductions for fund fees and tax <sup>1</sup> )	0.04%

### How has the fund performed in the past?

This shows the return after fund fees and tax for each tax year since the fund started and the average annual return since the fund started. It's important to note that this doesn't tell you how the fund will perform in the future.



### What fees were members charged?

The returns above are after deductions for fund fees<sup>2</sup>. These fees were last totalled up for the year to 31/03/13 and were<sup>3</sup>:

<b>Total fund fees</b>	1.57% of members' investments
<i>Which are made up of:</i>	
Annual management fee	0.64%
Performance-based fees	0.00%
Other fees and costs	0.93%

Members were also charged membership fees<sup>4</sup> of \$30 over the year to 31/03/13.

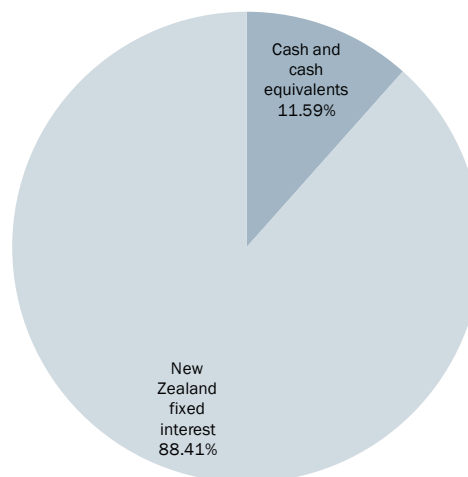
Members may also be charged fees for specific actions or decisions (e.g. members may make switches twice a year at no cost. Any subsequent switches will incur a \$25 fee). See page 16 of the current [Investment Statement](#) for more information about these fees.

#### Example of how this applies to a member

Jane had \$10,000 in the fund at the start of the year and didn't make any further contributions. At the end of the year, Jane received a return after fund fees and tax were deducted of \$4 (that's 0.04% of her initial \$10,000). Jane also paid \$30 in membership fees. This gives Jane a total return of -\$26 for the year.

### What does the fund invest in?

This shows the types of assets that the fund invests in.



### Target investment mix

This shows the mix of assets that the fund generally intends to invest in.

Cash and cash equivalents	0%
New Zealand fixed interest	100%
International fixed interest	0%
Australasian equities	0%
International equities	0%
Listed property	0%
Unlisted property	0%
Other	0%

## Top 10 investments

	Name	Percentage of fund net assets	Type	Country	Credit rating (if applicable)
1	Local Government Funding Agency Ltd 15/05/2021 6.00%	19.13%	New Zealand fixed interest	NZ	AA+
2	Watercare Services Ltd Bond 26/10/2018 5.685%	18.50%	New Zealand fixed interest	NZ	AA
3	Local Government Funding Agency Ltd 15/03/2019 5.00%	15.66%	New Zealand fixed interest	NZ	AA+
4	Auckland Council Bond 18/04/2017 5.79%	13.44%	New Zealand fixed interest	NZ	AA
5	Westpac At-Call Deposit	11.59%	Cash and cash equivalents	NZ	n/a
6	Rotorua District Council 15/09/2016 5.35%	6.66%	New Zealand fixed interest	NZ	Unrated
7	Far North District Council 19/08/2014 7.30%	5.37%	New Zealand fixed interest	NZ	Unrated
8	Queenstown Lakes District Council Bond 15/06/2016 5.79%	3.97%	New Zealand fixed interest	NZ	Unrated
9	Waitomo District Council 21/01/2014 FRN	3.25%	New Zealand fixed interest	NZ	Unrated
10	Palmerston North City Council 27/05/2015 6.86%	2.43%	New Zealand fixed interest	NZ	AA

The top 10 investments make up 100.00% of the fund.

## Key personnel

This shows the directors and employees who have the most influence on the investment decisions of the fund.

Name	Current position	Time in current position	Previous or other position	Time in previous or other position
Kevin Stirrat	Head of Investment Strategy Forsyth Barr Limited	8 years and 4 months <sup>5</sup>	Director, Deutsche Bank	11 years
Craig Alexander	Investment Manager Forsyth Barr Limited	7 months <sup>5</sup>	Head of Fixed Interest, Tower Investments	5 years
Sir Eion Edgar	Director	5 years and 11 months	Chairman, Forsyth Barr Limited (current)	15 years
Neil Paviour-Smith	Director	5 years and 11 months	Managing Director, Forsyth Barr Limited (current)	12 years
Paul van Koningsveld	Director	5 years and 11 months	Chief Operating Officer, Forsyth Barr Limited (current)	13 years

## Further information

### Information about conflicts of interest

There have not been changes to the nature, or increases in the scale of, the fund's related-party transactions compared with the last quarter. See the Forsyth Barr KiwiSaver Scheme annual financial statements for more information about the scheme's related-party transactions.

### Change to trade allocation, execution and proxy voting policies

There have not been changes to the fund's trade allocation, execution and proxy voting policies in the past three months. See [www.forsythbarr.co.nz/tradeandvotingpolicy](http://www.forsythbarr.co.nz/tradeandvotingpolicy) for more information about these policies.

### Changes to valuation methods

There have not been changes to the fund's valuation methods in the past three months.

### Electronic disclosure of this information

Most of the information contained in this statement, including some additional information, is available in a spreadsheet at [www.forsythbarr.co.nz/file-library/doc-ks-gds-csv-local-authority-dec13/](http://www.forsythbarr.co.nz/file-library/doc-ks-gds-csv-local-authority-dec13/).

## Notes

- Returns in this statement are after tax at the highest prescribed investor rate (PIR) of tax for an individual New Zealand resident. Your tax rate may be lower.
- Fund fees are fees charged as a percentage of a member's interest in the fund (i.e. as a percentage of their KiwiSaver account balance).
- A change in the fee structure from 1 April 2013 resulted in an increase in the management fee to 1.0% and scheme expenses to 0.2% (these are included in "other fees and costs"). However, total fund fees reduced due to full rebating of the underlying fund management fee (also shown as part of "other fees and costs"). The calculation and sample provided here assumes 100% has been invested in this fund.
- Membership fees are the fixed dollar charges for membership in the KiwiSaver scheme. From 1 April 2013, individual membership fees increased from \$30 to \$36 per year.
- Kevin Stirrat and Craig Alexander are employees of Forsyth Barr Limited (and not the manager). The manager has delegated part of the day to day management of the scheme to Forsyth Barr Limited.

## Manager's Certificate Forsyth Barr KiwiSaver Scheme

4 February 2014

The disclosure statement has been prepared for the purposes of the KiwiSaver (Periodic Disclosure) Regulations 2013.

To the best of the manager's, Forsyth Barr KiwiSaver Limited, knowledge after making reasonable inquiry, all information required by the regulations has been disclosed in accordance with these regulations and the information presented is accurate.

The disclosure statement does not contain any matter that is likely to deceive or mislead with regard to any particular that would be material to an offer of an interest in the Forsyth Barr KiwiSaver scheme.



Neil Paviour-Smith  
*Director*  
Forsyth Barr KiwiSaver Limited